



# Smart VIDEO DOORBELL

## Quick Start Guideline

Please read it carefully before using the product, and keep this handy



### Packing List

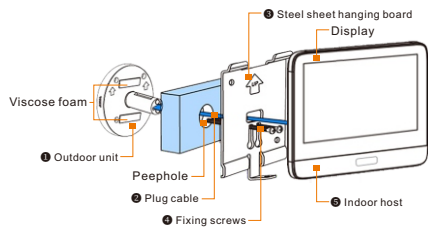
After opening the package, please make sure the doorbell (hereinafter referred to as the "Equipment") is in good condition. Make sure parts below are included.



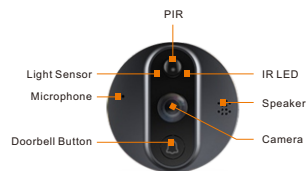
Outdoor unit



Indoor unit



### Appearance Introduction



1

### IR LED

The ambient light is not enough, this can increase picture brightness.

### Light sensor

Used to collect environmental light status, when ambient light drops down to 2 Lux, the IR LED will turn on automatically.

### MIC

Audio Capture

### Button

Doorbell button

### PIR

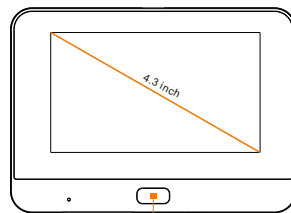
When object movement detected in front of the device, the device will send notification to your phone automatically.

### Camera

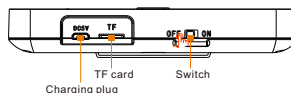
Video image capture

### Indicator Light

Blinking blue light : Configuration status  
Red light on : Charging the battery  
Blue light on : Connect to phone successfully;



Home Button



TF card

Switch

2

### Home Button

To reset the device , long press this button for 5 seconds  
To light the display , short press this button for 1 second

### Battery Slot

Support 1\*5000 battery

### USB Interface

Micro USB port charging

### Mounting Port

Use this port to mount the camera to bracket

### Setup the Device

Thank you for choosing our products! Please follow below instruction to setup and use your doorbell device.

#### 1. Downloading and installing the APP

Open App Store (for iOS) or Google Play Store (for Android outside China ) or Yingyongbao Store (For Android inside China) on your device, Search for "TuyaSmart" or scan QR code as following to download the right App for your device.



3

#### 2. Setting up the APP

Before you begin;

- > Make sure the TuyaSmart APP is installed to your device
- > Make sure that your device is connected to a 2.4GHz Wi-Fi networks, 5GHz network is NOT compatible.

User Register

New user register it according to guide steps, already registered user just login it



#### Register

China +86

Mobile Phone Number/Email

Get Verification Code

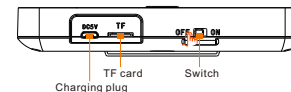
I Agree Service Agreement and Privacy Policy

#### 3. Add the device

Before add, make sure the device is in configuration – with a voice notification

"Please use the APP to set up the network", (Blue light blink per 1s)

If you didn't hear the voice notification, please RESET the device by pressing the home button for 5 seconds. You can release the button after the LED indicator turned off, the device will restart to default setting automatically.



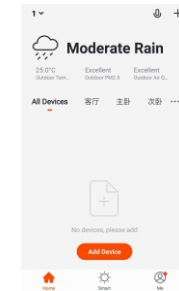
TF card

Switch

4

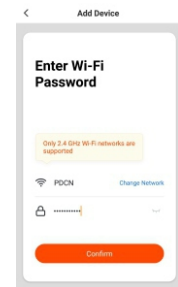
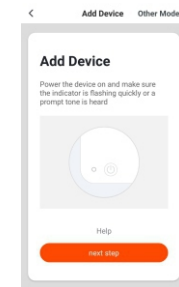
Open the "TuyaSmart" app and tap "Add Device"

Select device type : Video Surveillance - Smart Doorbell , then make connection with the device according to the steps



Choose "next step", the name of the WiFi network will automatically be filled in, enter the WiFi password and tap "confirm".

Note: The App will fill the corresponding password automatically if connected with the same WiFi, and you don't need to fill in password again.

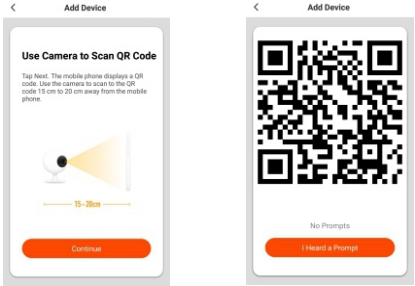


5

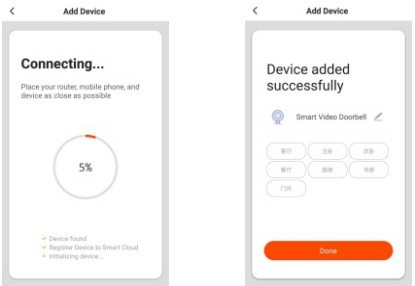
When you hear the prompt "connecting the network"

Choose "Continue" and use camera to scan the QR Code show on your phone, make sure about 15-20cm distance between the mobile device to the doorbell, When you hear the prompt "connecting the network", tap "I heard a Prompt" and waiting for device connection till success

If your camera fails to connect, please try to RESET the camera and repeat all steps again.



When the app show Device added successfully, Congratulations! The device is ready for use now!

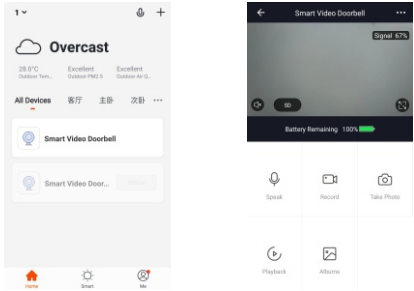


#### 4. WiFi Doorbell Functions

Support following functions: Two-way Audio; Video recording to local file; Take Photo; Playback video on Micro SD card.

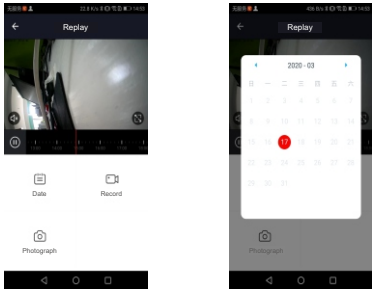
##### 4.1 Live view

In the device list section, it shows all devices with successfully connections, click the corresponding device to live view videos directly.



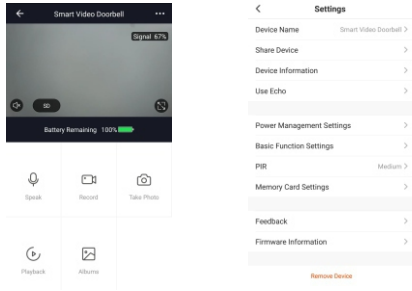
##### 4.2 Micro SD Card Video Playback

Micro SD Card Recording Type: APP wake up the device and take video; Press button to wake up the device and take video; Motion detection and take video;  
Remark: Currently the device only supports Micro SD cards with the FAT32 system format, others cannot be identified.



#### 5. Device Management

Click the corresponding device to live view videos directly in the device list section, You could choose "... " at the top right corner to enter device setting.



##### 5.1 Modify Device Name

Click "Device Name" on setting page to rename device

##### 5.2 Device Sharing

Click "Share Device" on setting page to share the device to other family members.

##### 5.3 Device Information

Click "Device information" on setting page to check device information.

##### 5.4 Power Management Setting

Click "Power Management Setting" to check power working status or set the low battery alarm threshold.  
Options: 10%-50%

##### 5.5 Basic Function Setting

Click "Basic Function Setting" to set below functions:

Flip Screen: on/off; Time Watermark: on/off; Talk Mode: One-Way Talk/ Two-Way Talk

##### 5.6 PIR sensitivity Setting

Click "PIR" to set the sensitivity.

PIR: Low/Medium/High/Off

•Off: Close PIR function.

- Low: Wake up and record footage if any motion in front of the camera last for more than 7 seconds been detected. A notification will be sent to mobile devices at the same time.
- Medium: Wake up and record footage if any motion in front of the camera last for more than 5 seconds been detected. A notification will be sent to mobile devices at the same time.
- High: Wake up and record footage if any motion in front of the camera last for more than 1 seconds been detected. A notification will be sent to mobile devices at the same time.

Note: In crowded environment, it is recommended to close or set the device to LOW sensitivity to reduce unwanted wake up and notification push to extend battery life.

##### 5.7 Memory Card Settings

Click "Memory Card Setting" to check Micro SD card status, include total capacity, used and remaining capacity or format memory card.

#### 6. Note for using

a. When device is powered by rechargeable lithium batteries. With fully charged, the battery life approximately could be around six months. The mobile device APP will send notification when battery voltage is low. Please charge the device in time if you get the notification.

b. Keep the camera within your router's range.

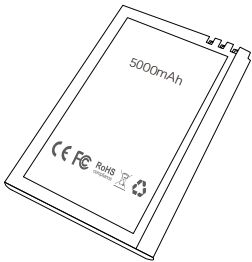
Make sure to pick a place where is covered by your WiFi signal. Thick or insulated doors can greatly reduce the strength of your Wi-Fi signal even if your router is close by. Trial test before installing the camera is recommended.

c. The device is designed based on low power consumption component, it could be remotely wake up from the APP, by PIR human motion detection, or doorbell press. The device will work for 30 seconds after wake up each time then back to standby.

#### Technical Specification

Resolution	1024*720/1920*1080
Recording Angle	166 Degree
IR LED	6*850nm
WiFi	IEEE 802.11 b/g/n
Audio	Two-way talk, noise cancellation
Memory Type	Micro SD Card
Storage Support	8 / 16 / 32 GB
Battery	1*5000 mA battery
Monitoring	Doorbell button, motion detection, remote wake up
Power Consumption	Standby: 200uA; Working: 170mA

1\*5000 mA battery normally can support 3-6 months usage.



#### Function Introduction



Can support 2~3 months of usage (depend on how many events trigger per day)



Exquisite image recording with wide angle lens.



Fast mobile device remote wake up in less than 1 second.



2.4GHz WiFi connection



High quality two-way talk with noise cancellation



PIR motion detection, notification will be sent to your phone whenever motion been detected in front of your camera, never miss a thing!



Day / Night mode automatic switching, ensure the best image quality 7 \* 24