

Trail Camera

Model: WiFi900Pro

Use Manual



WiFi + APP



Bluetooth



30FPS



36MP



H.265

SPECIFICATIONS

Photo recording

Photo resolution	36MP/30MP/24MP/20MP/16MP/12MP
File format	.JPG
Time lapse mode	5min / 10min / 30min / 60min
Multi-shot mode	Up to 9 photos per detection
Stamp (photos and video)	Date, time, temperature (°C /°F)and moon phase Camera/Video/Camera & video/Time lapse
Capture mode	

Video recording

Video resolution	4K / 2K/ 1080P / 720P / VGA(480P)
File format	.MP4 / H.265
Video length	5s /10s / 30s / 60s / 90s
Capture mode	Colorful mode at daytime, black and white mode at night

WiFi / APP / Bluetooth

Scan QR code to Download	Bluetooth	WiFi On / Off
WiFi Vision Distance 50M	Bluetooth Connection Distance	5M



App (IOS)
WiFiCameraSum



App (Android)
WiFiCamera

Memory storage

Support	<ul style="list-style-type: none">• Internal memory: none• External memory: Micro SD card (up to 256GB, Not included)
---------	----------------------------------------------------------------------------------------------------------------------------------------------

Viewing

Built-in screen	TFT 2.0”
-----------------	----------

Power source

Alkaline Battery	1.5V AA Battery*8 Rechargeable
Lithium Battery	lithium AA battery DC 12V 1A
External Power Jack	(3.5x1.35mm)

Detection system

Motion Sensor	1x PIR
Detection Angle	120°
Detection Range	Adjustable from 1 to 98 Ft
Trigger Speed	0.2second
Delay between each detection	1/5/10/30 seconds, 1/5/10/30 minutes

Night time illumination system

Infrat LEDs	44pcs LEDs
Flash Range	< 98 Ft
Exposure	Auto / 100 / 200 / 400

Optical field of view

120°

Dimensions

150mm" x 100mm" x 60mm"

Recommendations

Operating temperature	(-4°Fto + 158°F) (-20°C to + 70°C)
-----------------------	------------------------------------

Waterproof level

IP 66

THE BASICS



Color Display Screen

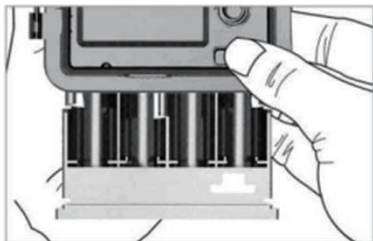
USB Port
Micro SD
Card slot



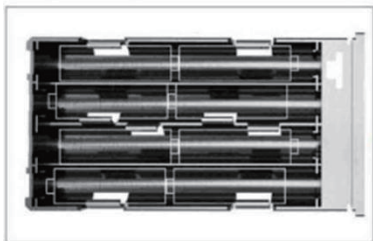
Battery Compartment
button

Mode Switch

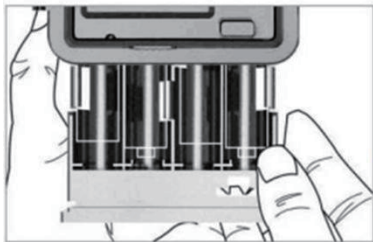
INSTALLATION



- ① Open the battery cover and insert 8 batteries(AA) following to the positive and the negative battery sign.



- ② Close the battery cover to Resist water and dust



③

⚠ WARNING

Be Sure to put AA batteries in the correct direction. Inserting batteries incorrectly will cause permanent damage.

Step 2

Insert Micro SD(Not included) memory card to Trail Camera.



Step 3



① Slide the mode switch from **OFF** to **TEST** to activate the camera and view the user setup screen.

② And then slide the mode switch from **TEST** to **ON**.

③ The camera will start working after 10 seconds countdown, meanwhile the red indicator light will blink.

Step 4

Scan the QR codes below **or** search for “WiFiCameraSum” on the Apple appstore **or** search for “WiFiCamera” on the Google Play to download the app.

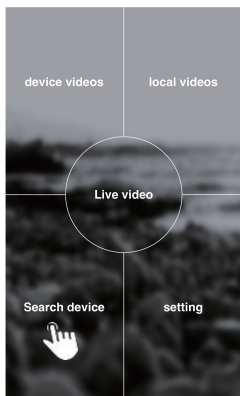


IOS

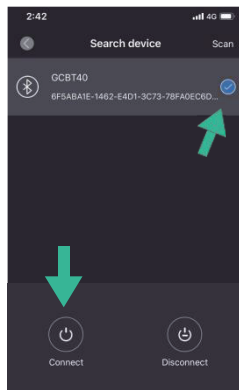


Android

Step 5

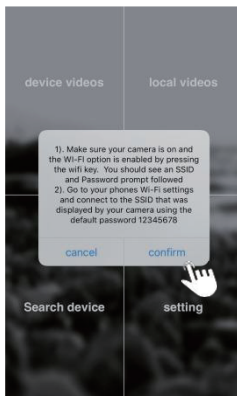
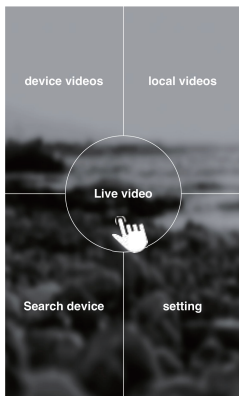


- 1 Open the APP on your cellphone and tap “Search Device” at the left lower corner



- 2 select “GCBT40” and then tap “Connect” to connect your phone and camera with Bluetooth. You can see the camera flashing yellow light one time and then flashing blue light.

Step 7



- 1 Back to the main page of app and then tap “Live video”.
- 2 Go to WiFi setting on your phone, select
- 3 “CAM_XXXXXXXXXXXX” Enter password “12345678”.
(WiFi name and password can be changed in the APP when connected)

GETTING START

Night

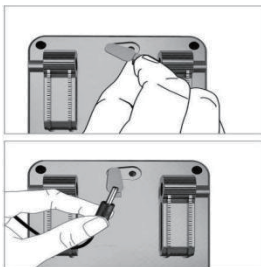


Day



EXTERNAL POWERSUPPLY

Use 12V DC Power source (Not included)

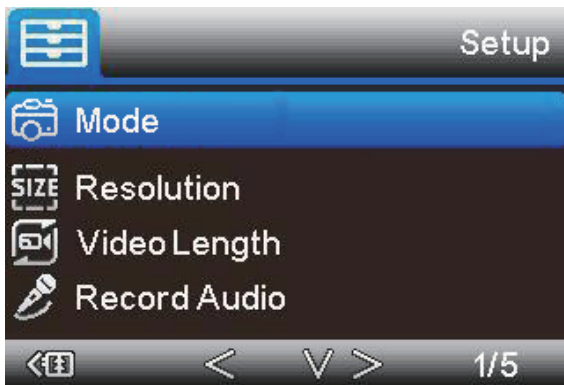


OPERATING BUTTON



- MENU** Menu Button -- Menu Setting
- Shutter** Shutter Button -- Take Video / Photo manually / Quit
- ↑ ↓** UP / Down -- Switch Video or Photo Mode
- Right -- Replay mode, press UP / Down to replay, press Menu to Delete or Protect
- ←** Left -- Play / Stop the video
- WiFi Button: ON/OFF WiFi / OK Button

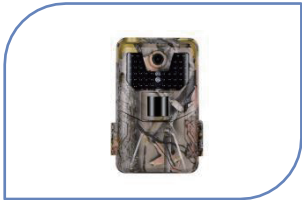
SETUP MENU



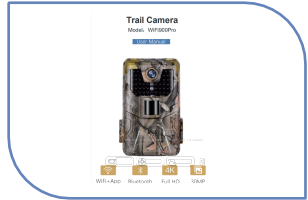
Setup	Sub Menu	Description
Mode	Camera,video,camera & video,Timelapse	Picture,video,picture and video,taking picture regular
Resolution	4K,2K, 1080P, 720P, WVGA(480P)	Video Resolution
Video Length	5/10/30/60/90 Seconds	Each Video max 90 sec, default 10sec
Record Audio	On / Off	Video With Sound

Setup	Sub Menu	Description
Image Size	36MP/30MP/24MP/20MP/ 16MP/12MP	Image resolution
Interval	1/5/10/30sec,1/5/10/30min	Max 30 minutes delay
Time Lapse	5/10/30/60 minutes	Take pic every 5min
Sequence	1/3/6/9 pictures	Max 9 pics one shot
ISO	Auto/100/200/400	Exposure level
Over write	On / Off	Cycle Recording
PIR Sensitivity	High/Medium/Low	Adjust PIR sensitivity
Language	EN/FR/DE/IT/ES/POR/ HRV/DAN/SVE/SUO/POL /PYC	Adjust PIR sensitivity
Frequency	50HZ / 60HZ	Screen refresh rate
Camera ID	CAM000	6 numbers or letters
Password	On / Off	4 numbers
Working Timer	00:00:00 to 23:59:59	N/L
Date / Time	DD/MM/YY	N/L
Format	OK / Cancel	Format memory card
Default Setting	OK / Cancel	Back to default

In The box



▲ Camera



▲ Manual



▲ Mounting Strap



▲ Card reader

TROUBLESHOOTING

Q: What is the range of WiFi and Bluetooth?

A: The range of camera WiFi is about 98Ft at forest or indoor and 328Ft at open space. The range of camera Bluetooth is between 16 to 26 Ft.

Q: How close do i need to be to turn the wifi on using the bluetooth?

A: The maximum distance of the camera's Bluetooth switch is 5 meters

Q: Does it have a connection to be wired for 9vdc or 12vdc instead of battery?

A: Yes, you can use 9vdc for this camera, there is a power connector in the box, dedicated to the external power supply.

Recommend using 8*1.5V AA batteries in this trail camera to obtain maximum battery life.(NOT INCLUDED)

Q: Can you change WiFi name and password of the camera?

A: Yes, you can change different WiFi name and your own password by app on phone.

Q: Can you connect to your in-home WiFi and the internet provided the camera

A: WiFi900 Bluetooth trail camera connects with the phone's WiFi, not in-home WiFi/Internet. Download the APP on your phone and then connect with WiFi. You can adjust the setting and check the photo /video on the phone directly.

Q: Is the app available for iPhone?

A: Yes, Trail Camera use "WiFiCameraSum" APP for Apple Store and "WiFiCamera" APP for Google Play, it's available for Android and IOS system phone.