

4G Trail Camera

Model: HC-801Pro

Live Video & APP



4G 4G

 256GB

H.265

 30MP

4K video

 0.2s

SPECIFICATIONS

Photo recording	
Photo resolution	30MP/24MP/20MP/16M/12MP
File format	.JPG
Time lapse mode	5min/10min/30min/60min
Multi-shot mode	Up to 9 photos per detection
Stamp (photos and video)	Date, time, temperature (°C / °F) and moon phase camera
Capture mode	Camera / Video / Camera+video / Time lapse
Video recording	
Video resolution	4K/2.7K/1080P/720P/VGA(480P)
Video format	.MP4/H.265
Video length	5s/10s/30s/60s/90s
Memory Storage	
Internal memory :	none / external memory : Micro SD card up to 256GB(not included)
Viewing	
Built-in screen	TFT 2.0 inch
Power Source	
Alkaline battery	1.5V AA battery X 8
Lithium battery version	Built-in rechargeable 5000Mah lithium battery X1
External power jack	DC 12V/1.5A (3.5X1.35mm)
Detection System	
Motion Sensor	3X PIR
Detection Angle	120°
Detection Range	Adjustable from 1 ~20 meters
Trigger Speed	0.2 second
Delay between each detection	1/5/10/30seconds, 1/5/10/30 minutes
Night time illumination system	
Flash Range	< 20 meters
Exposure	Auto/100/200/400
Optical field of View	
	120°
Dimensions	
	135X90X76mm
Recommendations	
Operating temperature	-20°C to +70°C
Waterproof level	
	IP65

THE BASICS

High Power Invisible LEDs



Color Display Screen

Setup Buttons

8AA Batteries Depot



SIM Card slot

Mode
Switch

USB Port

Micro SD card slot

Stand Knob Port

INSTALLATION

Steps 1

Open the battery cover and insert 8 batteries(AA), following to the positive and negative battery sign, then close the battery cover to resist water and dust.



Step1

- ① Open the battery cover and insert 8 batteries(AA) following to the positive and the negative battery sign.

Close the battery cover to

Resist water and dust

②

⚠ WARNING

Be Sure to put AA batteries in the correct direction.
Inserting batteries incorrectly will cause permanent damage.

③

WARNING

Be sure to put AA batteries in the correct direction, inserting battery incorrectly will cause permanent damage.

Step2

Insert Micro SD card (not included) to camera.

Step3

Insert the SIM card into the card slot.

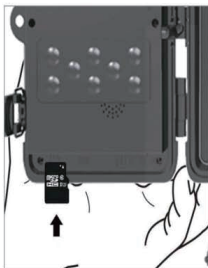
Step 2

Insert Micro SD(Not included) memory card to Trail Camera.



Step 3

Insert the sim card into the card slot After sim card is inserted Turn on and check the left side of the Screen



Step4 slide the mode switch from OFF to TEST,

Step5 Start the QR Code to download APP (Suntekcam) , you can also download APP at Google play and Apple store by searching Suntekcam.

Step 4



① Slide the mode switch from **OFF** to **TEST** to activate the camera and view the user setup screen.

② And then slide the mode switch from **TEST** to **ON**.

③ The camera will start working after 10 seconds countdown, meanwhile the red indicator light will blink.

See if the signal grid is green, Green means receiving sign.
White means signal reception failed
Need to check if the sim card is locked



Step 5

Scan the QR codes below [or](#) search for " SUNTEKCAM " on the Apple appstore
[or](#) search for "SUNTEKCAM" on the Google Play to download the app.



IOS



Android

APP BINDING

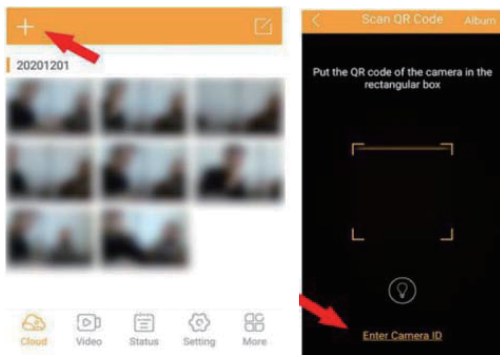
1. How to check your camera ID and bind APP

1). Press "menu" button, there is a interface and select "Network" and press OK, then choose "Device ID" and press OK, you will find camera QR code.



2). Start the APP, press "+" to scan the camera's QR code, then you can add camera to APP

You can also enter the camera ID manually.



3). fill in Device name (any name is ok) and password (default password 123456) and press "submit"

Device ID

123456789

Device name

Please enter the name of the...

check device password

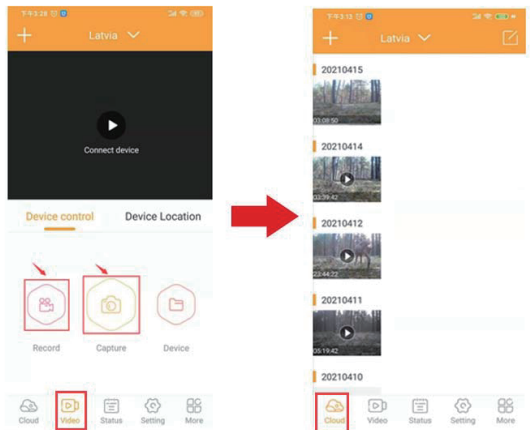
Please enter password

Submit

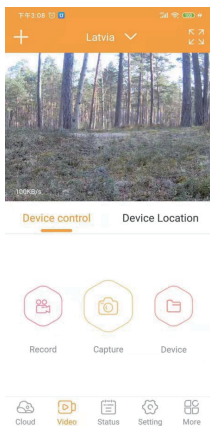
2. How to get pictures and videos in APP?

In "video" sub menu,

- 1). press" capture" , then APP will have a photo from camera
- 2). press" record" , then APP will have a video from camera



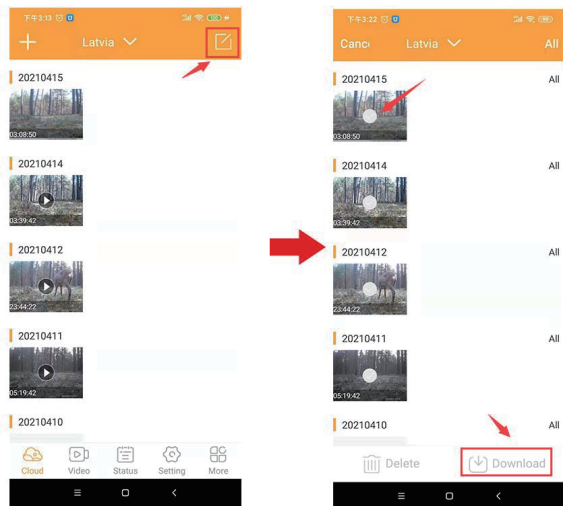
3). Press "connect device", APP will have live video from camera.



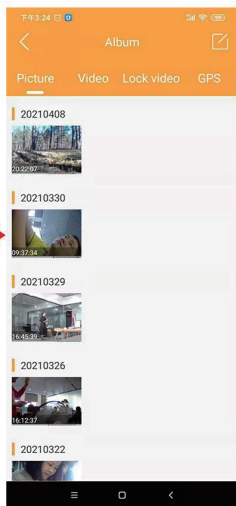
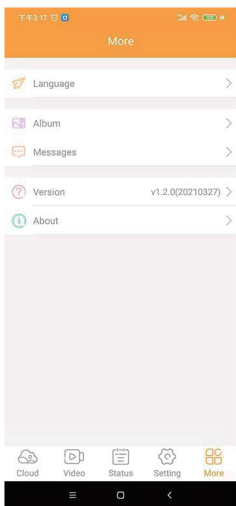
PS: Device location (GPS) is not supported now.

You can download the pictures and videos to mobile phone.

a).press the icon on the right corner, choose the pictures and videos, then download them to your mobile phone.



In submenu "more", choose "Album", you will find the downloaded pictures and videos.



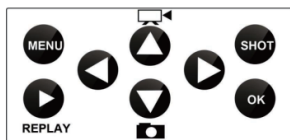
This camera has external power jack, you can connect to external power for long time working. the power plug size need 3.5X1.5mm, DC 12V/2A.

EXTERNAL POWER SUPPLY

Use 12V DC Power source (Not included)



OPERATING BUTTON



MENU Menu Button -- Menu Setting

REPLAY Shutter Button -- Start/End Video Recording or Photo Taking

↑ Video Button -- Video Recording Mode

↓ Camera Button -- Photo Mode

→ Replay Button -- Replay Mode

● Button: ON/OFF

Setup Menu

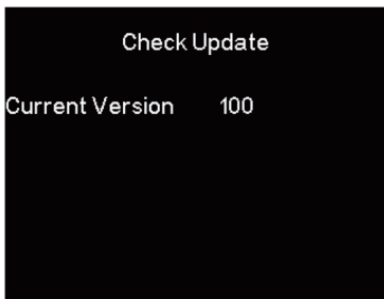


Setup	Sub Menu	Description
Mode	Camera, video, camera+video, Time lapse,	Picture, video, picture and video, taking picture regular
Resolution	4K,2K, 1080P, 720P, VGA(480P)	Video resolution
Video Length	5/10/30/60/90 seconds	Each video max 90 seconds, default 10 seconds
Record Audio	On/ Off	Video With sound
Image Size	30MP/24MP/20MP/16MP12MP	Image resolution
Interval	1/5/10/30 sec, 1/5/10/30 min	Max 30 minutes delay
Time Lapse	5/10/30/60 minutes	Take Picture every 5 min
Sequence	1/3/6/9 pictures	Max 9 pictures one shot
ISO	Auto/100/200/400	Exposure level
Over write	On/off	Cycle Recording
PIR sensitivity	High/Medium/Low	Adjust PIR sensitivity
Language	EN/FR/DE/IT/ES/POR/HRV/DAN /SVE/SUC/POL/PYC	Adjust PIR sensitivity
Frequency	50HZ/60HZ	Screen refresh rate
Camera ID	CAM000	6 numbers or letters
Password	On/Off	4 numbers
Working Timer	00:00:00 to 23:59:59	N/L
Date/Time	DD/MM/YY	N/L
Format	OK/Cancel	Format memory card
Default setting	Ok/Cancel	Back to default

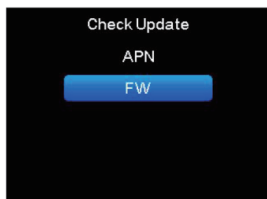
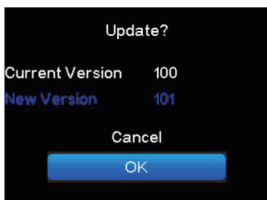
System

This camera support update the firmware online, in camera menu, choose "network", and "check update", then press OK button,

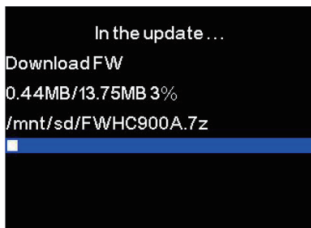




if the current version is latest version, it doesn't need to make firmware update.



if there is new version firmware, you can choose "Ok" and download the latest "FW"



When the bar is 100%, the update is completed.

In the box



- Camera X1
- Antenna X1
- User manual X1
- Mounting Strap X1
- USB cable X1

FAQ:

Q: Will the camera still support MMS/SMP?

A: no, camera will not support mmsconfig application and mms/smp, but you can install the mmsconfig version firmware to get it back.

Q:When the app start, menu is in Chinese, how can i change to English menu?

A: change your mobile phone language to English and restart the app.

Q:Does this app support all the camera?

A: support 4G and 4G pro camera, doesn't support 2G camera.

Q: Can this App add many cameras?

Yes, it can add more cameras if you have, and you can also remove camera in Setting submenu.