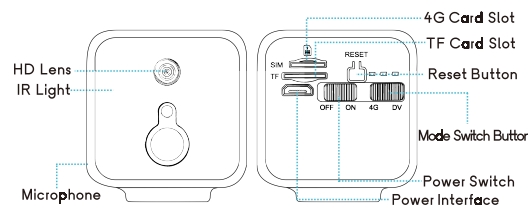




USER MANUAL

Product Description



How to factory reset: When the camera is turned on, press and hold the reset button for about 3 seconds until the blue light and the green light flash alternately slowly.

Device Description

- This device has two modes: IP Camera (4G) mode and Recorder (DV) mode.
- Built-in battery.
- Support DC5V/2A power supply.

Indicator Status

Yellow light: always bright during charging, goes off when fully charged.

Blue light: slow flash---waiting for 4G connection, fast flash --- during 4G connection, always bright --- 4G connection success.

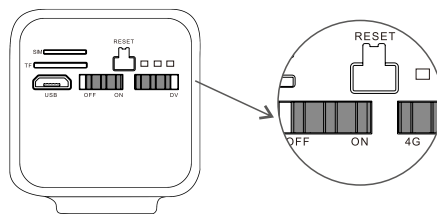
Green light: slow flash---recording, fast flash---no SD card inserted.

Factory reset: the blue light and green light flash alternately slowly.

Low battery alarm: the blue light and green light flash rapidly at the same time.

Step 1: Pre-Setup

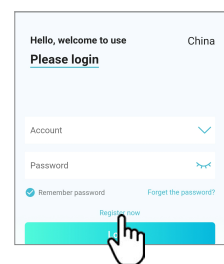
- ☑ Please insert a SIM card that have internet access.
- ☑ Turn the mode switch button to “4G” mode.
- ☑ Turn the power switch to “ON”.



Step 2: APP Download and Registration



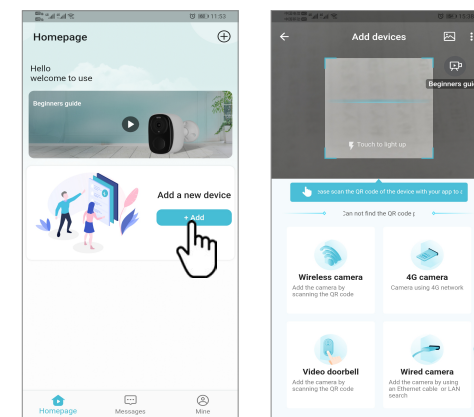
- 1 Search for “O-KAM” in App Store or Google Play, or scan the QR cord to download the app.



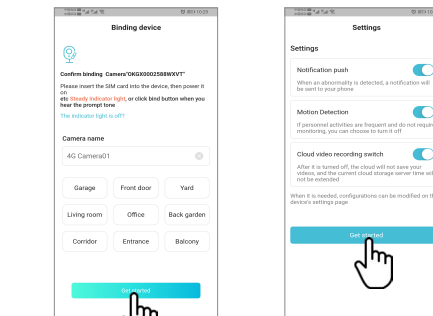
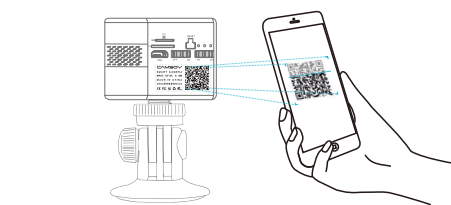
- 2 Click “Register now”, and then follow the prompts to register your account.

Step 3: Add Devices to the APP

Method One: Scan QR code to add camera

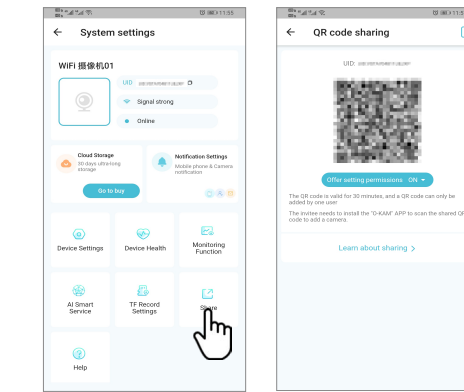


- 1 Click “Add Device” to enter the page of add devices.



- 2 Scan the QR code on the body label and click “Get started”.

Device Share



Enter the “Settings” interface of the camera and select “Share” to generate the device sharing QR code. Other users open the APP, click the “Add” button on the home page, and then scan the QR code to add the device.