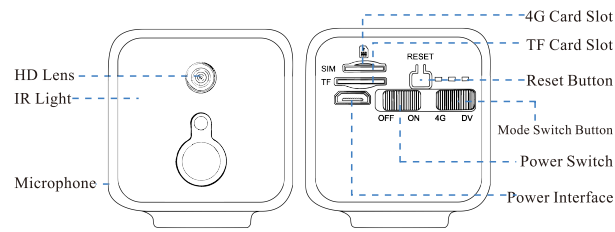




USER MANUAL

Product Description



How to reset camera: Turn the power switch to "ON", hold on the reset button for 5 seconds until you see the blue light and the green light turn on together, and then the blue light flashes slowly.

— 1 —

Device Description

- This device has two modes: IP Camera (4G) mode and Recorder (DV) mode.
- Built-in battery.
- Support DC5V/2A power supply.

Indicator Status

Yellow light: always bright during charging

Blue light: slow flash---waiting for connection; fast flash---during connection; always bright ---connection success

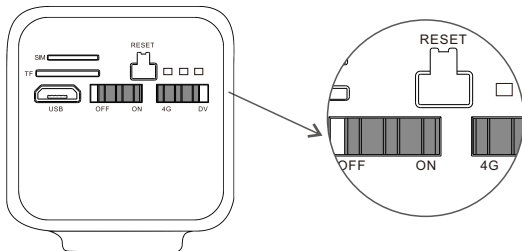
Green light: slow flash---during recording; fast flash---does not insert a TF card

Restore factory: the green and blue lights are on, then the blue light flashes slowly

— 2 —

Step 1: Pre-Setup

- ☑ Turn the power switch to "ON" mode.
- ☑ Turn the mode switch button to "4G" mode.
- ☑ Please insert a SIM card that have internet access.

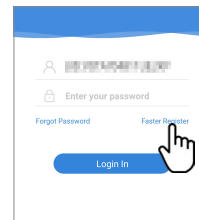


— 3 —

Step 2 : APP Download and Registration



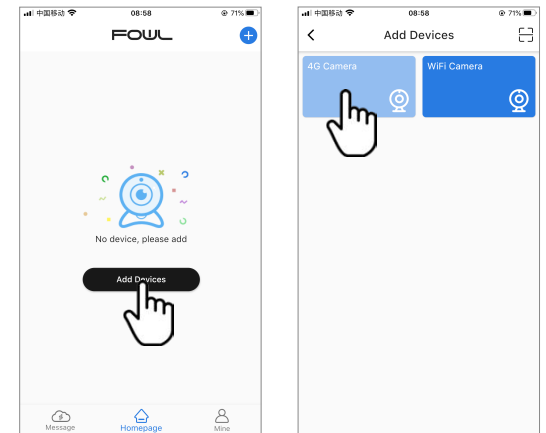
- 1 Search for "Fowl" in App Store or Google Play, or scan the QR code to download the app.



- 2 Click "Register", enter the user name and password to complete the registration.

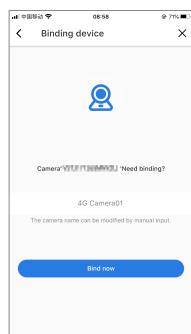
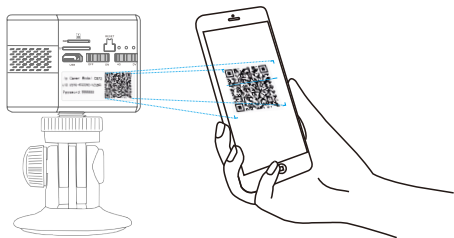
— 4 —

Step 3: Add Devices to the APP



- 1 Click add device and select 4G camera.

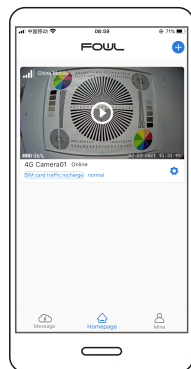
— 5 —



- Scan the QR code attached to the camera body label and click the "Bind now".

— 6 —

You are Done!



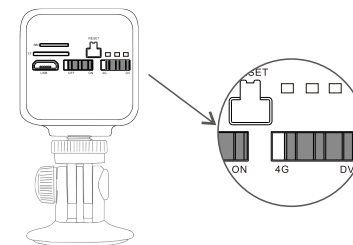
Please write down your device information:

Fowl account name: _____

Fowl account password: _____

— 7 —

DV Mode Usage



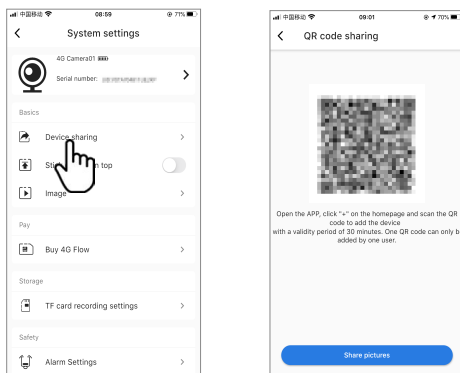
Turn the power switch to "ON", the mode switch button to "DV", and insert a TF card for 24 hours of continuous recording.

How to view recording videos?

- Turn the mode switch button to 4G mode, enter the APP, and go to "TF card" to view.
- Place the TF card in the card reader and plug the card reader to the computer, then you can view the video on the computer.

— 8 —

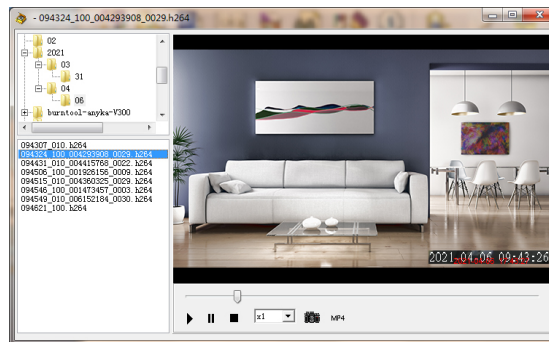
Device Share



Click "Settings" on the right corner, then select "Device Share" --- "QR Code Sharing". Other users can open the app and click the "+" in the upper right corner of the home page to scan the QR code to add the device.

— 9 —

Dedicated PC Video Player



Download dedicated video player for playing micro-sd card video:
<https://www.dropbox.com/s/pufqcz0y66x9vtw/VideoPlayer4.0.zip?dl=0>

If any questions, please feel free to contact our customer service.
 Thank you!

— 10 —