

# Fingerprint Intelligent lock manual

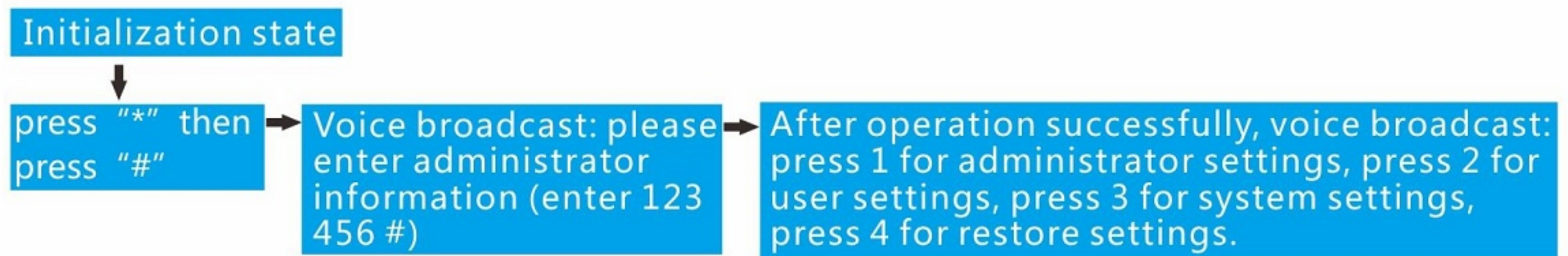
## (Support Tuya Smart)

Ideal for metal grill door, wooden door, home door lock, office door lock, etc

### Functions and Operations

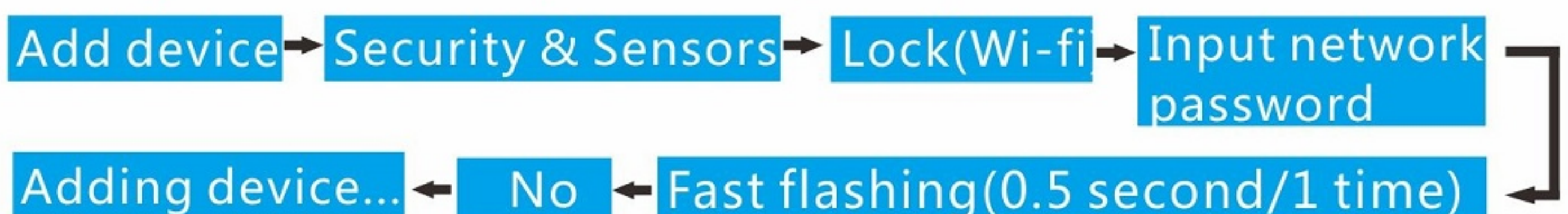
- 1) Unlock information: refers to the input fingerprint, password or IC card information (including administrators and ordinary users).
  - 2) Key "\*" : Clear key/back key.
  - 3) Key "#" : Confirm key/Enter menu function key.
2. The factory administrator initial password is 123456, under the initial state any fingerprint, IC card or password can open the lock.

### 2. Access door lock function management



### 1. Administrator settings

- 1) Add administrator press "1"  
Add administrator press "1", enter administrator information, input fingerprint or password (Fingerprint inputting 4 times, password input 6-8 bit digital twice(888888#), IC card input once).
- 2) Delete administrator information press "2"  
Enter number press # confirm(002#)(Unable to delete all, the first administrator reserved)
- 3) Add a network  
Hotspot connection press "1"  
**Intelligent connection press "2" (TUYA)**





## 2. Ordinary user settings

### 1) Add user information

Press "1" voice prompt: input unlocking information, input fingerprint or password(Fingerprint inputting 4 times, password input 6-8 bit digital twice (888888#), IC card input once. After operation successfully it's able to input other user information.

### 2)Delete user information

Press" 2" voice prompt: press " 1" delete user number, press "2" delete all, press "1" input number(010#) delete successfully.

### 3).System setting

Press "3" voice prompt:press "1" voice setting, press "2" unlocking mode, press "3" language setting, press "4" time setting, press "5" change room number.

#### 1) Voice setting:

Press "1" voice prompt: Turn on voice; press "2" Turn off voice

#### 2) Unlocking mode setting

Press "2" voice prompt: press "1" single unlock mode, press "2" combine unlock mode.

#### 3) Language setting

Press "3" voice prompt: press "1" Chinese, press "2" English.

#### 4) Time setting

Press "4" voice prompt: Present time is 201903041153, please modify.Please modify based on the format year-month-day, 202004181613, press # confirm.

#### 5) Room number modify

Press "5" voice prompt: room number 8888, please modify correct room number(4 bit), press # confirm.

### 6) Add/delete remote controller (Remote control module interface reset button on back panel)

1. Add remote controller: Press and hold the remote control module interface reset button on the back panel, release after 5 beeps tone, and now press any button on the remote controller, after 3 beeps tone, the remote controller adding is now successful.

2. Delete remote controller: Press and hold the remote control module interface reset button on the back panel, release after 5 beeps tone, and now press any button on the remote controller, after a long beeps tone,the remote controller is successfully remove.

To delete all remote controller: Press and hold the remote control module interface reset button on the back panel, release after 12 beeps tone, all remote controller will be deleted.



4. Restore factory setting (**Press and hold around 8s, and hear a beeps tone reset successfully**)

## Others:

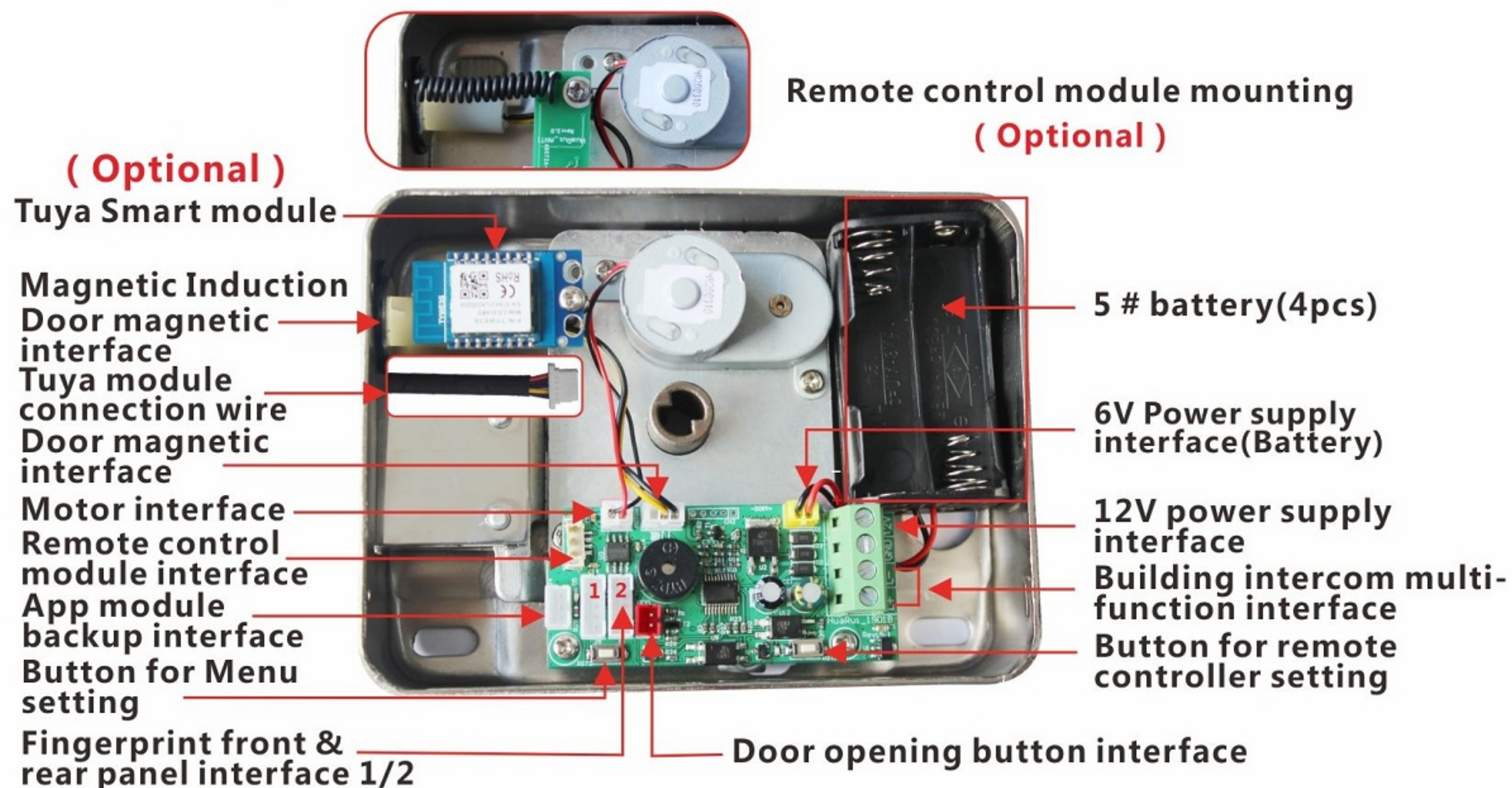
- 1) The system will automatically enter the invalid input state if the unauthorized unlocking information is continuously incorrectly input for more than 5 times within 5 minutes, and the invalid input state will last for 90 seconds.
- 2) After the voltage is lower than 4.5v, the lock will automatically alarm every time when it is opened. After the alarm, the lock can be opened for 200 times. After the number of times exceeds, each unlock delay is 5 seconds, new batteries must be replaced before the number of times available.
- 3) Password peeping prevention function: Input password as follows when opening the door with password: XXX password XXX; you can add some extraneous codes before and after the password, and then press # to confirm. The password must be included in the input contents.
- 4) If there is no operation more than 10 seconds, system will automatically exit.
- 5) Initialization setting: Long press the rear panel initialization button for 5 seconds to initialize, all unlock information and records will be cleared after initialization (Please be careful operation).

## Technical Parameters

Technical Parameters	
Working Voltage	4X AA 5# alkaline batteries (Not include) <b>Or 12V power supply</b>
Static current	< 50-65 $\mu$ A
Administrator	9 group
Unlock ways	Fingerprint, Card, Password, Key (Optional for Tuya app or Remote controller)
Working current	> 250mA (Strong Drive)
Fingerprint Capacity	< = 100
Card Capacity	< = 100
Password Capacity	< = 100
Remote control capacity	< = 30
Password	6-8 bit
Virtual password	16 bit
Low voltage alarm	4.5 $\pm$ 0.2V
Working Temperature	-10 $^{\circ}$ C ~ 60 $^{\circ}$ C
Humidity	20% ~ 93%



# Interface specification



**Note: Wi-fi module or Remote controller module it's optional, provide on request.**

## Install Diagram

