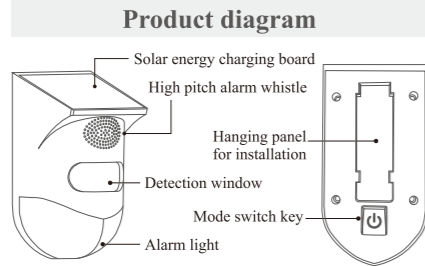
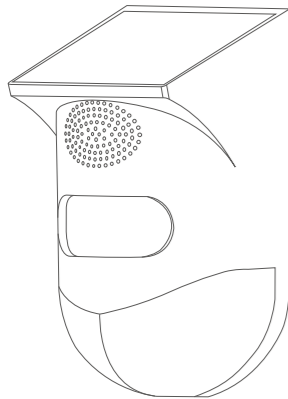


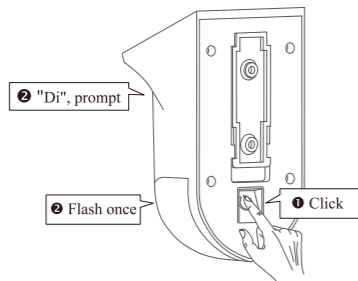
# Solar outdoor infrared sound and light alarm

## WiFi user's manual

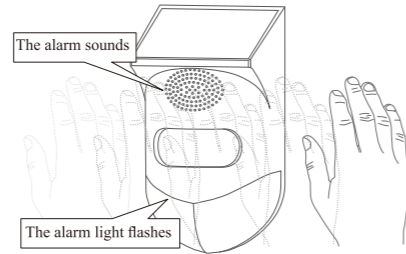


### First use

① Power on (enter 24-hour alert mode);



② Trigger alarm;



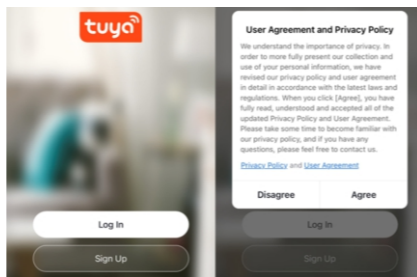
### Mobile app

1. Download app



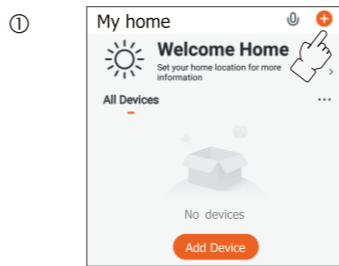
- Scan the QR code to download the APP.
- IOS: Download the "Tuya Smart" or "Smart Life" at APP Store.
- Android: Download the "Tuya Smart" or "Smart Life" at Google Play.

2. Register/login Tuya Smart

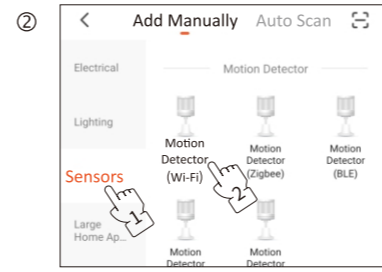


3. Network configuration with mobile phone (two methods)

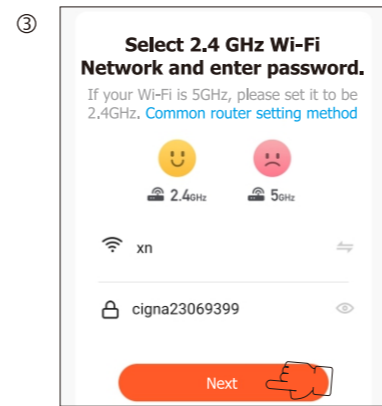
Method 1: Wi-Fi quick connect



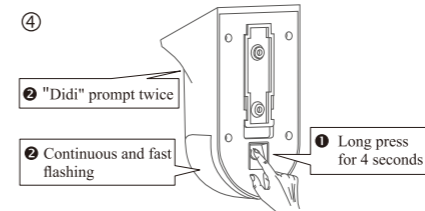
②



③

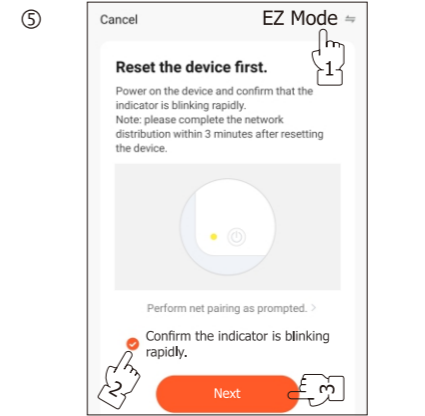


④

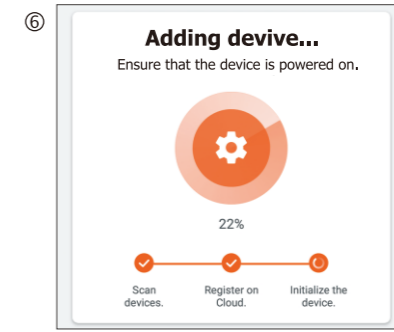


⚠ Observe whether the LED light flashes quickly. If it is not flashing quickly, press and hold for 4 seconds.

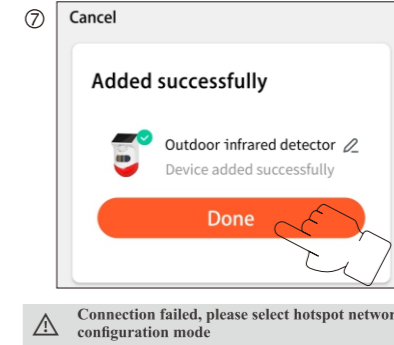
⑤



⑥



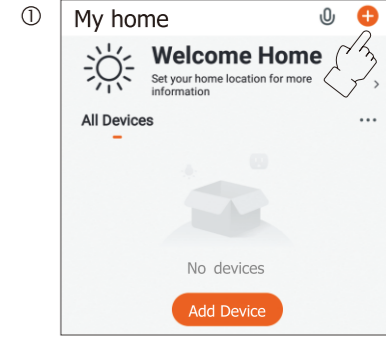
⑦



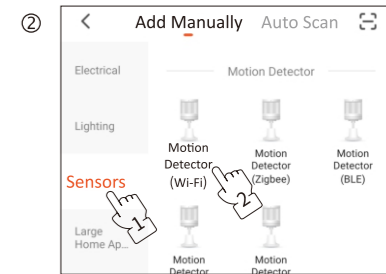
⚠ Connection failed, please select hotspot network configuration mode

Method 2: Hotspot distribution network

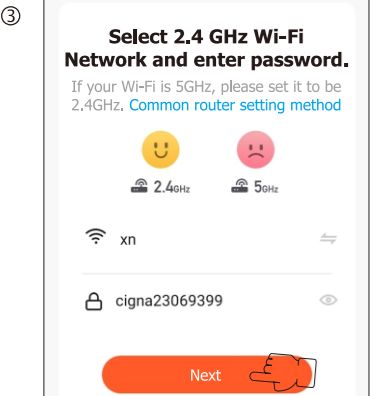
①



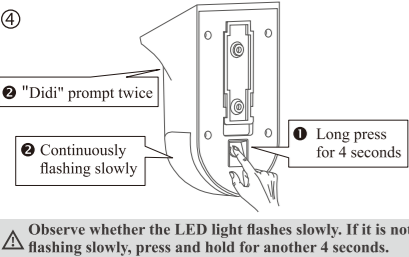
②



③

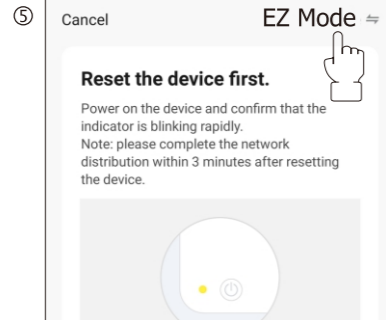


④

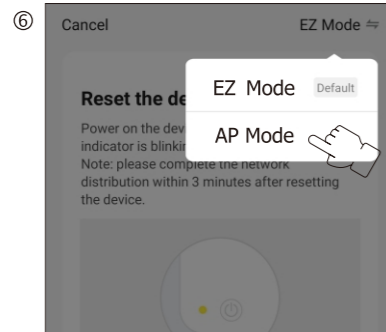


⚠ Observe whether the LED light flashes slowly. If it is not flashing slowly, press and hold for another 4 seconds.

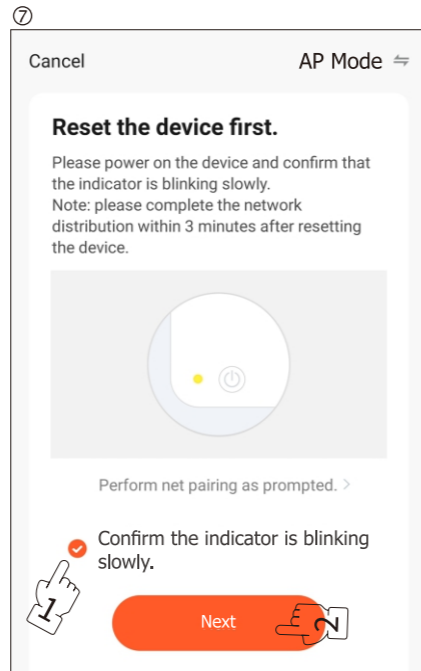
⑤



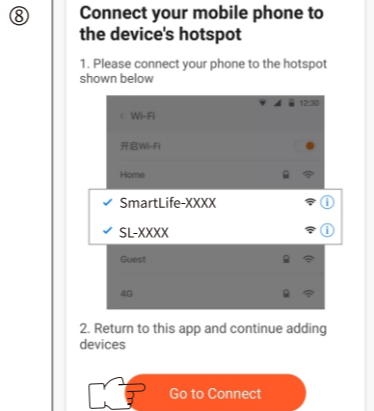
⑥



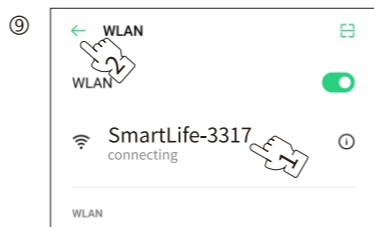
⑦



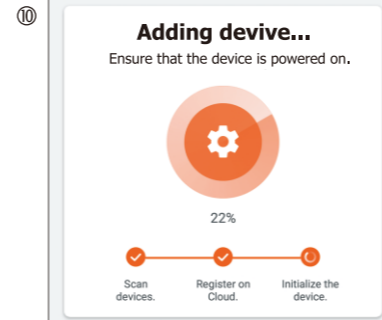
⑧



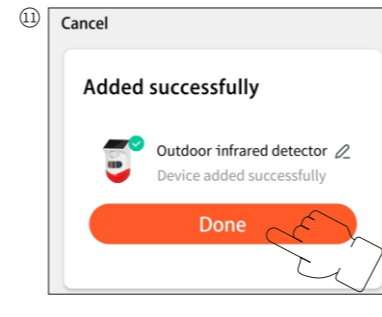
⑨



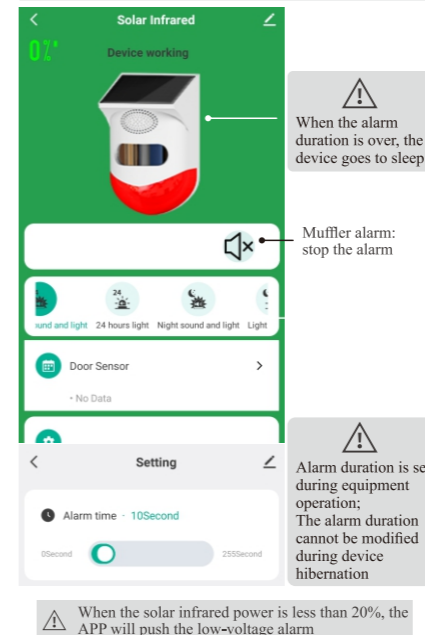
⑩



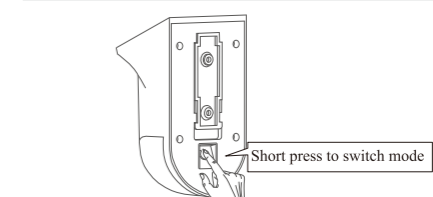
⑪



### APP Operation



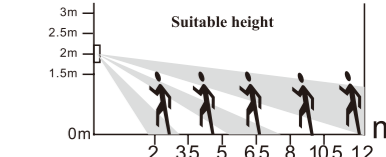
### Work mode selection



Mode	Prompt sound	Alarm lamp	Working status
1	Di	Blink 1 time	24-hour alert (with sound and light)
2	Didi	2 flashes	24 hours silent (silent and flashing)
3	Dididi	Flashes 3 times	Night vigilance (sound and light at night)
4	Didididi	4 flashes	Silent at night (no sound at night but light flashing)
5	No sound	Keep on for 3 seconds	Shut down

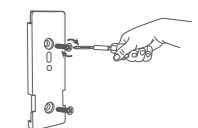
### Installation

① About installation height



② Installation steps

① Screw in the screws with a cross screwdriver in clockwise direction as the figure below:



② Shown as the figure below:

