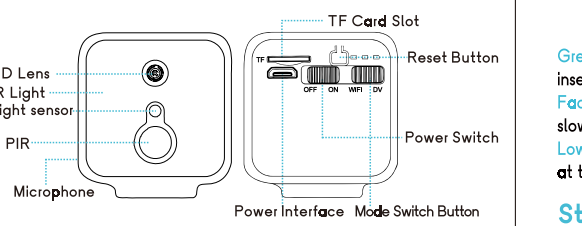


Product Description



How to factory reset: When the camera is turned on, press and hold the reset button for about 3 seconds until the blue light and green light flash alternately slowly.

Device Description

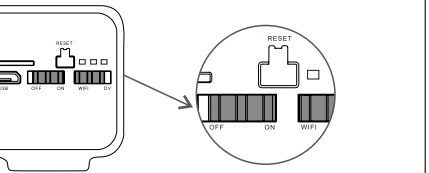
- This device has two modes: IP Camera (WiFi) mode and Recorder (DV) mode.
- Built-in battery.
- Support DC5V/2A power supply.

Indicator Status

Yellow light: always bright during charging, goes off when fully charged.
Blue light: slow flash --- waiting for Wi-Fi connection, fast flash --- during Wi-Fi connection, always bright --- Wi-Fi connection success.
Green light: slow flash --- recording, fast flash --- no SD card inserted.
Factory reset: the blue light and green light flash alternately slowly.
Low battery alarm: the blue light and green light flash rapidly at the same time.

Step 1: Pre-Setup

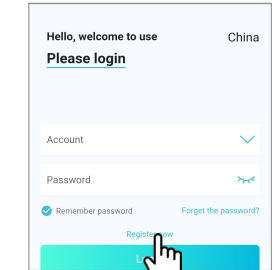
- ☑ Turn the power switch to "ON" mode.
- ☑ Turn the mode switch button to "WiFi" mode.
- ☑ Please place the camera within 2 meters of the router when connecting to the Internet.
- ☑ Connecting the phone to the WiFi and make sure know the exact WiFi password. (only supports 2.4GHz)



Step 2: APP Download and Registration



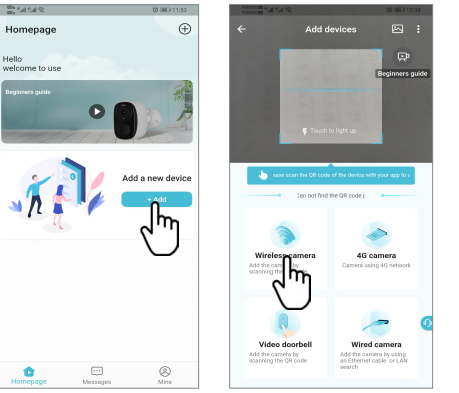
- 1 Search for "O-KAM" in App Store or Google Play, or scan the QR code to download the app.



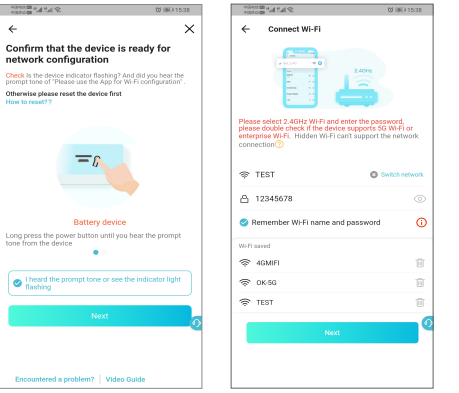
- 2 Click "Register now", and then follow the prompts to register your account.

Step 3: Add Devices to the APP

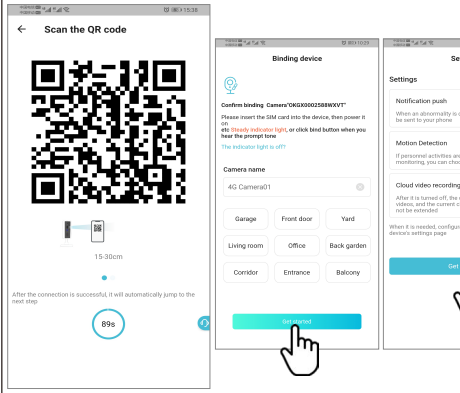
Method One: Scan QR code to add camera



- 1 Click "Add" and scan the QR code on the camera, or directly select "Wireless camera".

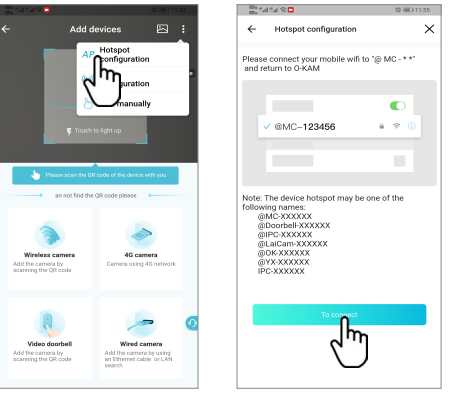


- 2 Turn on the camera and 3 Confirm the Wi-Fi you want to connect and enter the correct password. (5G Hz networks are not supported)

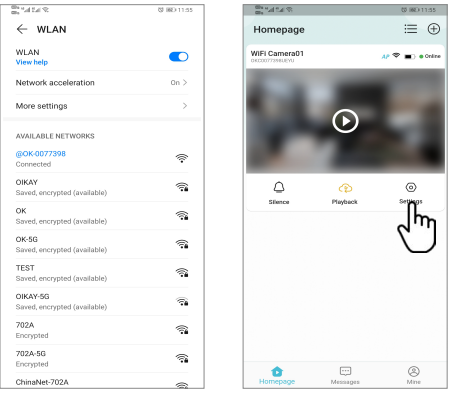


- 4 Scan the QR code generated by the app with the camera lens until the camera makes a beep or the blue light flashes quickly.
- 5 After the camera is successfully connected to the internet, click "Get started".

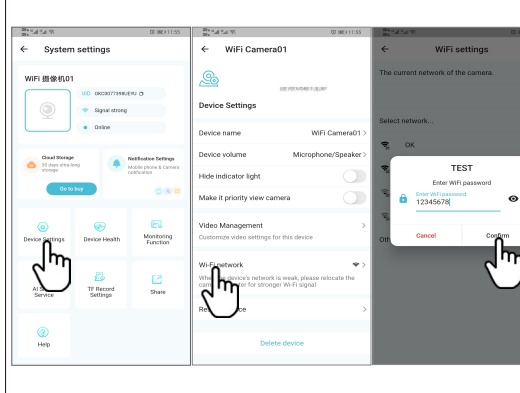
Method Two: AP Connection



- 1 Click the icon in the upper right corner of the page, and select "Hotspot configuration".
- 2 Click "To connect".

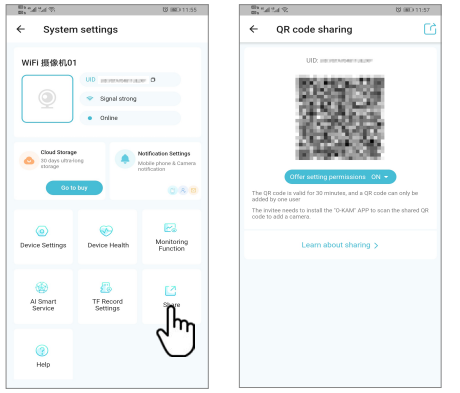


- 3 Enter the network settings of the mobile phone, select the signal beginning with @OK - ***** and connect.
- 4 Return to the App to successfully add the device, and then click "Settings".



- 5 Click "Device Settings".
- 6 Click "Wi-Fi network".
- 7 Select the Wi-Fi signal to be connected and enter the correct password, then click "Confirm".

Device Share



Enter the "Settings" interface of the camera and select "Share" to generate the device sharing QR code. Other users open the APP, click the "Add" button on the home page, and then scan the QR code to add the device.