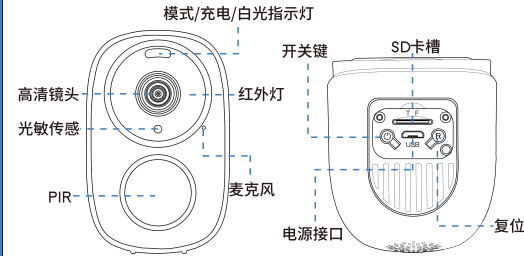




使用手册

外观介绍



恢复出厂方法: 摄像机开机状态, 按住复位键3秒左右, 直到听到“复位完成, 即将重启设备”的提示音。

设备说明

- 此设备有两种工作模式: AP热点模式和WiFi远程模式
- 内置可充电锂电池
- 支持DC5V/2A电源充电器

指示灯状态

- 黄灯:** 充电中长亮, 充满电熄灭。
- 蓝灯:** 慢闪等待Wi-Fi连接, 快闪Wi-Fi连接中, 长亮Wi-Fi连接成功。
- 恢复出厂:** 蓝灯和绿灯交替慢闪。
- 低电报警:** 蓝灯和绿灯同时快闪。

第一步 安装前准备

- 长按开关键3秒开机。
- 复位键长按3秒恢复出厂设置。
- 第一次连网使用建议将摄像机放置于路由器2米之内。
- 手机连接路由器Wi-Fi, 并清楚Wi-Fi连接密码。(只支持2.4GHz Wi-Fi)
(关机操作: 长按开关键3秒关机)

第二步 APP下载和注册



1 请在手机商城搜索“Fowl”下载APP, 或者扫描二维码下载。



2 打开APP, 点击“快速注册”, 输入用户名、密码, 完成注册。

第三步 添加设备到APP

方法一: 扫码连接



1 点击添加设备选择“扫码添加摄像机”。



2 将摄像机开机。



3 长按复位键3秒, 将摄像机恢复出厂设置。



4 确认需要连接的WiFi并输入正确的WiFi密码。(设备目前不支持5G Hz网络)



5 用摄像机镜头扫描APP生成的二维码, 直到摄像机发出“滴”的一声。



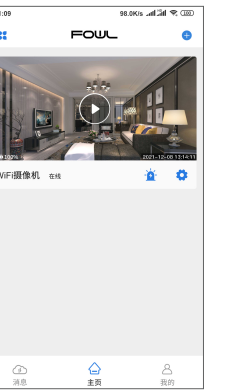
6 等待摄像机联网成功后点击“立即绑定”。



7 请进入手机设置—选择OK-XXX开头的WiFi热点并连接。

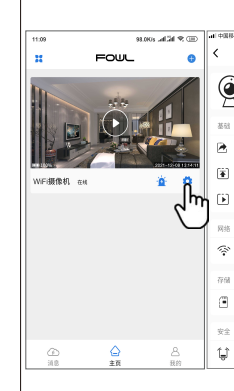


8 打开APP, 点击播放即可观看和操作摄像机。

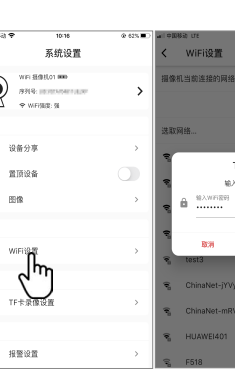


9 进入摄像机“参数设置”, 点开“设备分享”, 选择“二维码分享”。

配置WiFi



1 进入摄像机“参数设置”, 点开“设备分享”, 选择“二维码分享”。



2 选择WiFi配置。



3 选择您的无线网络并正确输入WiFi密码。

设备分享

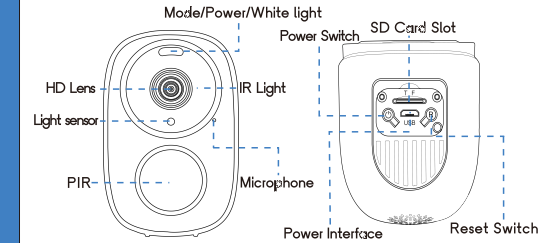


进入摄像机“参数设置”, 点开“设备分享”, 选择“二维码分享”。其他用户可打开APP, 点击首页右上角“+”符号, 扫描此二维码添加设备。



USER MANUAL

Product Description



How to factory reset: When the camera is turned on, press and hold the reset button for about 3 seconds until you hear the "reset complete, will restart the device".

Device Description

- This device has two modes: AP mode and WiFi mode
- Built-in battery.
- Support DC5V/2A power supply.

Indicator Status

- Yellow light:** always bright during charging, goes off when fully charged.
- Blue light:** slow flash --- waiting for Wi-Fi connection, fast flash --- during Wi-Fi connection, always bright --- Wi-Fi connection success.
- Factory reset:** the blue light and green light flash alternately slowly.
- Low battery alarm:** the blue light and green light flash rapidly at the same time.

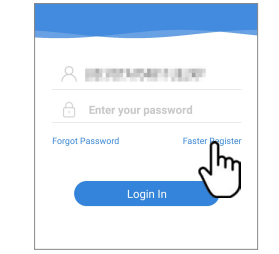
Step 1: Pre-Setup

- ☑ Long press the Power Switch button 3 seconds to turn on
 - ☑ Long press the reset button 3 seconds to factory reset.
 - ☑ It's recommended to place the camera within 2 meters of the router for the first time connecting to the Internet.
 - ☑ Connect the mobile phone to the router Wi-Fi, and know the Wi-Fi connection password. (Only 2.4GHz Wi-Fi is supported)
- (How to power off: Long press the power button for 3 seconds to power off)

Step 2: APP Download and Registration



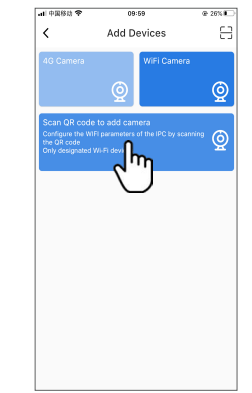
- 1 Search for "Fowl" in App Store or Google Play, or scan the QR code to download the app.



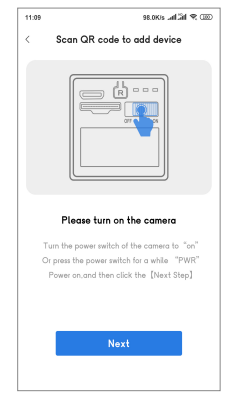
- 2 Click "Register", enter the user name and password to complete the registration.

Step 3: Add Devices to the APP

Method One: Scan QR code to add camera



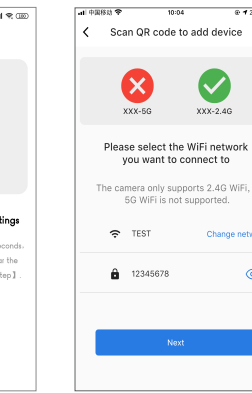
- 1 Click Add Device and choose "Scan QR Code to add camera".



- 2 Turn on the camera.



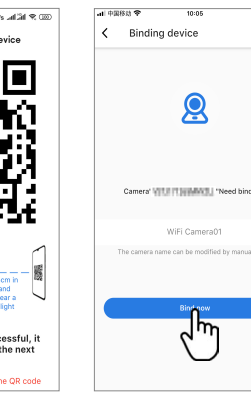
- 3 Long press the RESET button for 3 seconds to restore the camera to factory settings.



- 4 Confirm the WiFi to be connected and enter the correct password. (The device does not support 5G Hz networks)

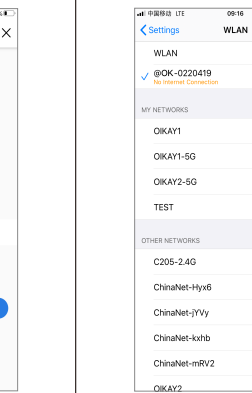


- 5 Scan the QR code generated by the App with the camera lens until the camera makes a beep.

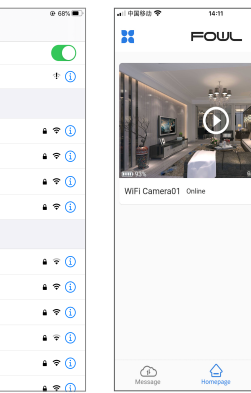


- 6 After the camera is successfully connected to the Internet, click "Bind now".

Method Two: AP Connection

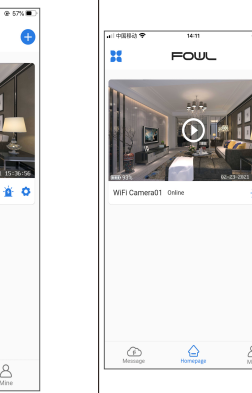


- 1 Please go to your mobile phone WiFi Settings, select the WiFi hotspot that start with OK-XXX and connect it.

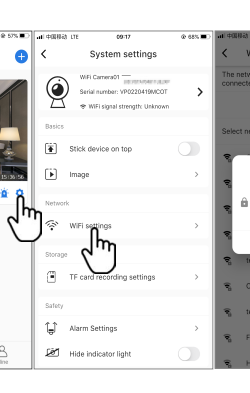


- 2 Open the app and Click play to watch and operate the camera.

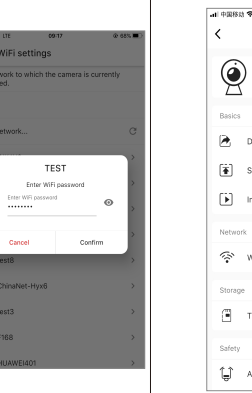
Configure WiFi



- 1 Enter camera parameters

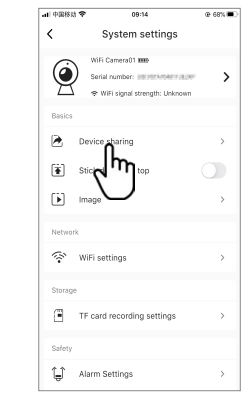


- 2 Select WiFi settings.



- 3 Select your home WiFi and enter the WiFi password correctly.

Device Share



- Click "Settings" on the right corner, then select "Device Share" --- "QR Code Sharing". Other users can open the app and click the "+" in the upper right corner of the home page to scan the QR code to add the device.

