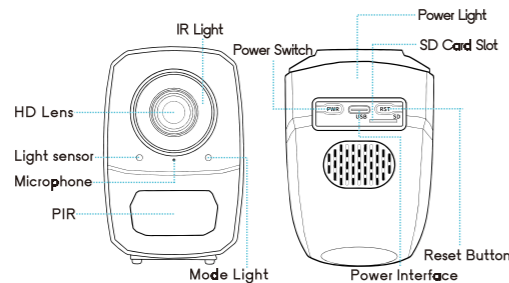


USER MANUAL

Product Description



How to factory reset: When the camera is turned on, **press and hold the reset button for about 3 seconds** until the blue light and green light flash alternately slowly.

Device Description

- This device has two modes: AP mode and WiFi mode
- Built-in battery.
- Support DC5V/2A power supply.

Indicator Status

Yellow light: always bright during charging, goes off when fully charged.

Blue light: slow flash --- waiting for Wi-Fi connection, fast flash --- during Wi-Fi connection, always bright --- Wi-Fi connection success.

Factory reset: the blue light and green light flash alternately slowly.

Low battery alarm: the blue light and green light flash rapidly at the same time.

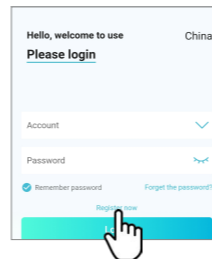
Step 1: Pre-Setup

- ☑ Long press the “PWR” button 3 seconds to turn on
- ☑ Long press the reset button 3 seconds to factory reset.
- ☑ It's recommended to place the camera within 2 meters of the router for the first time connecting to the Internet.
- ☑ Connect the mobile phone to the router Wi-Fi, and know the Wi-Fi connection password. (Only 2.4GHz Wi-Fi is supported)
- ☑ How to power off: Long press the power button for 3 seconds to power off)

Step 2: APP Download and Registration



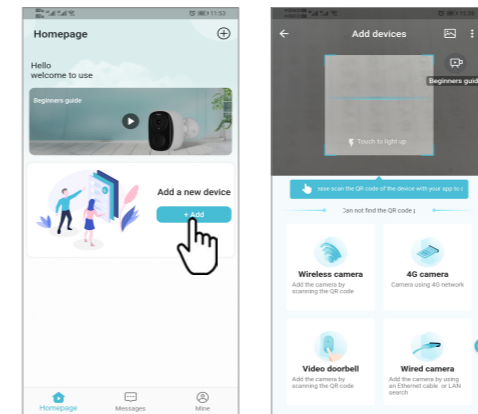
- 1 Search for “O-KAM” in App Store or Google Play, or scan the QR cord to download the app.



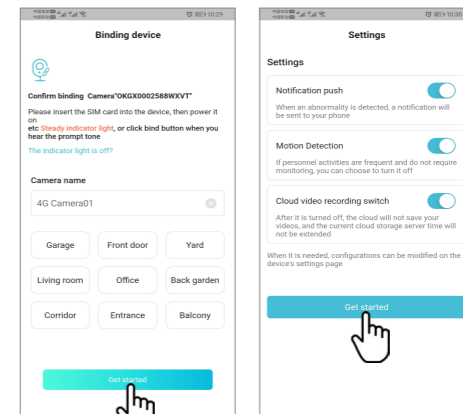
- 2 Click “Register now”, and then follow the prompts to register your account.

Step 3: Add Devices to the APP

Method One: Scan QR code to add camera

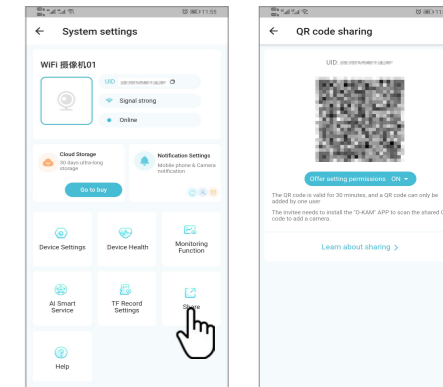


- 1 Click “Add Device” to enter the page of add devices.



- 2 Scan the QR code on the body label and click “Get started”.

Device Share



Enter the “Settings” interface of the camera and select “Share” to generate the device sharing QR code. Other users open the APP, click the “Add” button on the home page, and then scan the QR code to add the device.